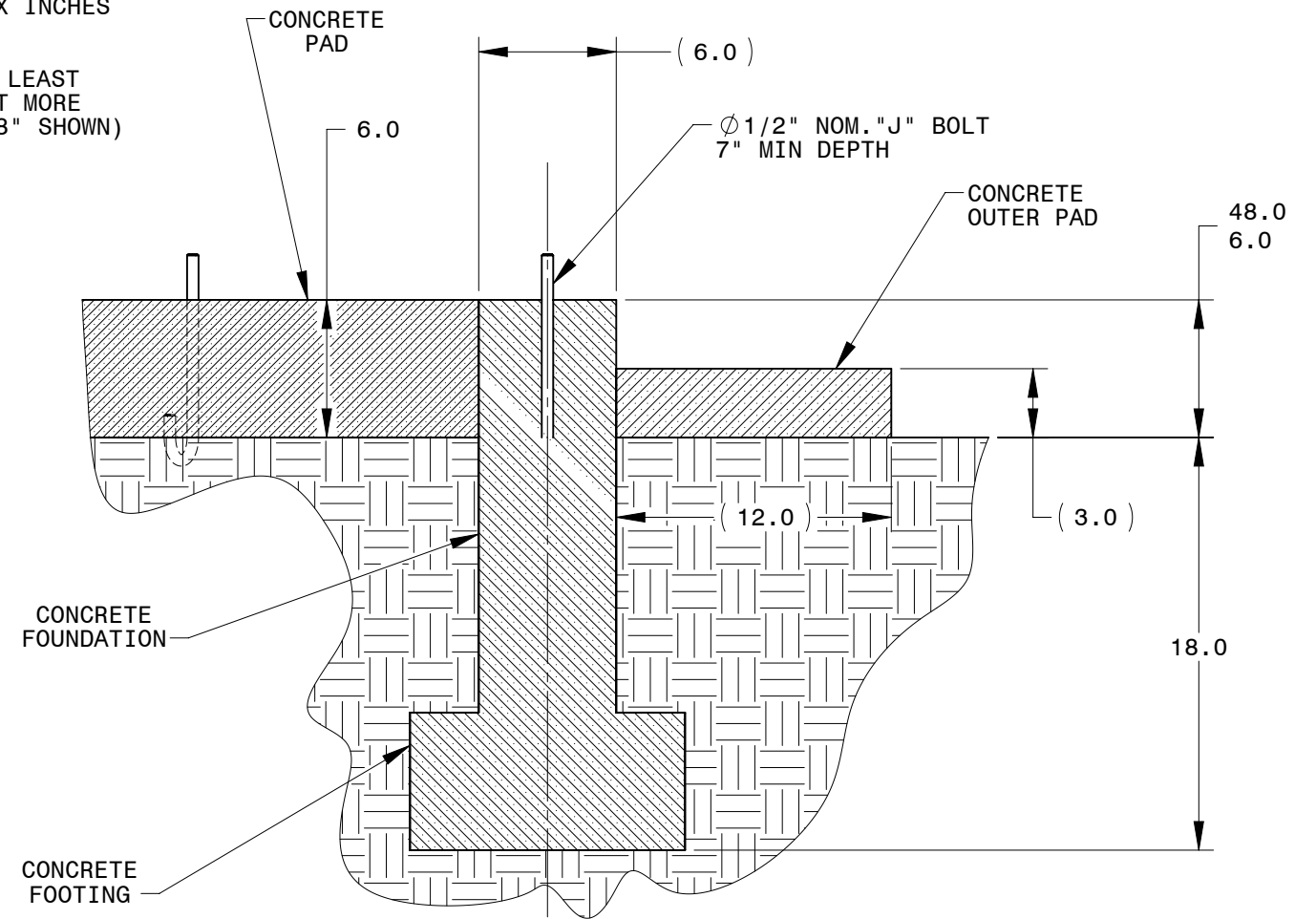
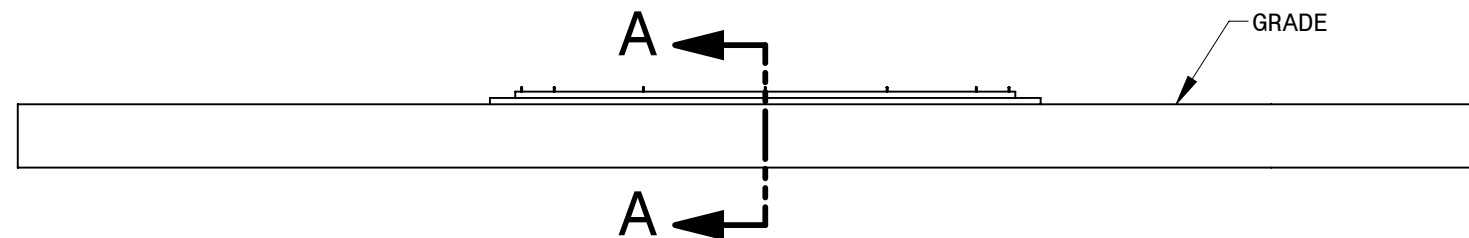
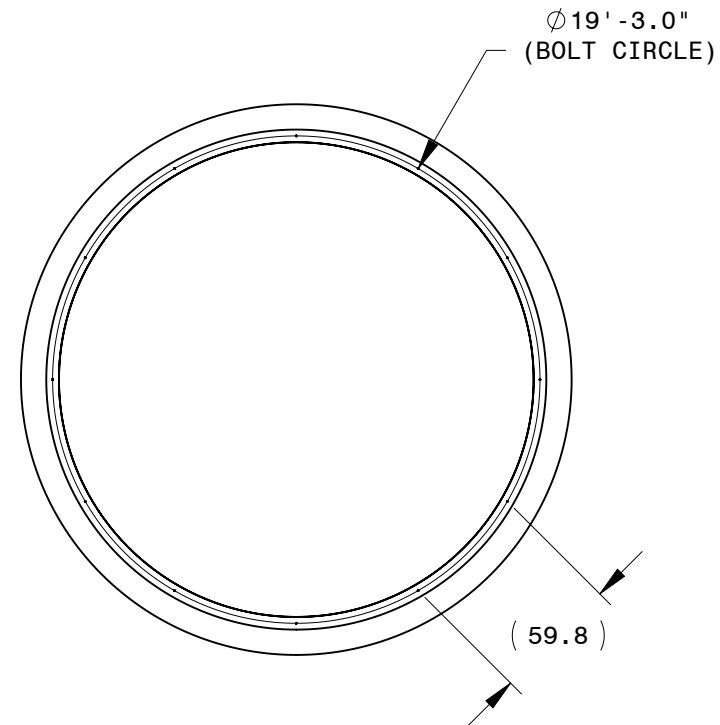
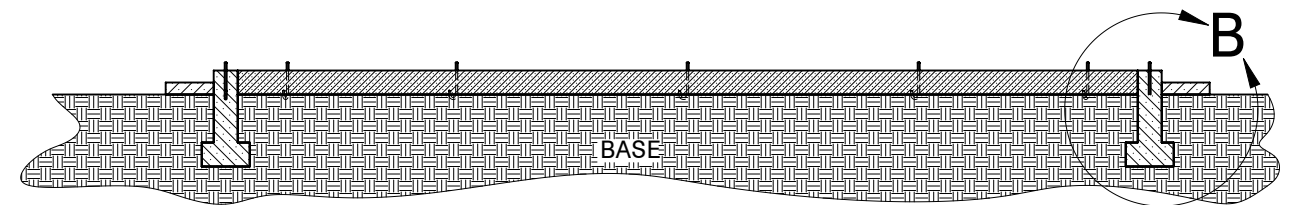


NOTES:

- 1) CONCRETE CONSTRUCTION SHALL MEET A MINIMUM COMPRESSIVE STRENGTH OF TWO THOUSAND POUNDS PER SQUARE INCH (PSI). CONCRETE MUST BE MIXED AND DELIVERED IN ACCORDANCE WITH THE REQUIREMENTS OF ASTM C94 (Ready-Mix Concrete), OR MAY BE FIELD MIXED. FIELD MIXED CONCRETE SHALL BE SUBJECT INDEPENDENT COMPRESSIVE STRENGTH TESTING AND SPECIAL INSPECTION.
- 2) CONCRETE FOOTINGS MUST BE PLACED ON FIRM, UNDISTURBED SOIL.
- 3) CONCRETE FOOTINGS MUST BE CONTINUOUS, BE A MINIMUM OF TWELVE INCHES WIDE BY SIX INCHES THICK, BE REINFORCED WITH A MINIMUM OF TWO NO. 4 CONTINUOUS REBAR, AND BE AT LEAST EIGHTEEN INCHES BELOW FINISH GRADE MEASURED FROM THE BOTTOM OF THE FOOTING.
- 4) CONCRETE FOUNDATIONS MUST BE A MINIMUM OF SIX INCHES THICK, BE REINFORCED WITH A MINIMUM OF TWO CONTINUOUS HORIZONTAL NO. 4 REBAR AT THE TOP, BE REINFORCED VERTICALLY WITH NO. 4 REBAR AT TWENTY-FOUR INCHES ON CENTER, EXTEND AT LEAST SIX INCHES ABOVE FINISHED GRADE, AND HAVE A TOTAL HEIGHT OF NOT GREATER THAN FORTY-EIGHT INCHES.
- 5) CONCRETE FOUNDATIONS THAT ARE FORMED BY A THICKENED CONCRETE SLAB EDGE AS PART OF A SLAB ON GRADE FLOOR MUST BE REINFORCED WITH TWO PIECES OF NO. 4 REBAR IN THE UPPER PART AND TWO PIECES OF NO. 4 REBAR IN THE LOWER PART OF THE FOUNDATION. THE CONCRETE FLOOR WILL BE REINFORCED ACCORDING TO WAC 246-359-430. THE THICKENED CONCRETE SLAB EDGE MUST EXTEND AT LEAST EIGHTEEN INCHES BELOW THE FINISHED GRADE, BE AT LEAST TWELVE INCHES IN WIDTH, AND PROVIDE A SLAB HEIGHT OF AT LEAST SIX INCHES ABOVE FINISHED GRADE.
- 6)  $\phi 1/2$ " NOMINAL STEEL BOLTS SHALL BE EMBEDDED AT LEAST SEVEN INCHES DEEP IN THE CONCRETE AND SPACED NOT MORE THAN SEVENTY-TWO INCHES APART. (APPROXIMATELY 58" SHOWN)



**DETAIL B**  
**SCALE 1 : 8**



**SECTION A-A**  
**SCALE 1 : 48**